

Strong Coherent Coupling of Many Levels Across the Ionization Limit Via 17 & 36 GHz Microwave Fields

J. H. Gurian, K. R. Overstreet, H. Maeda, and T.F. Gallagher

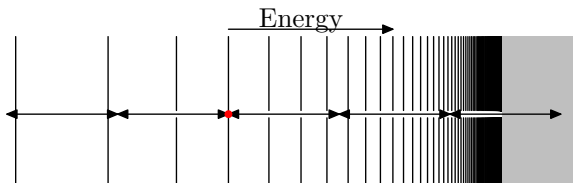
28 May 2010



MW Ionization as Dynamical Anderson Localization

How does microwave ionization in Rydberg atoms occur as we approach the photoionization limit?

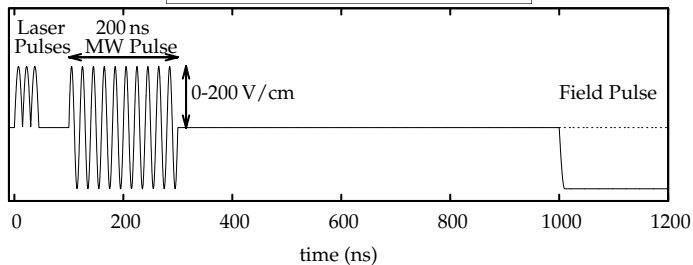
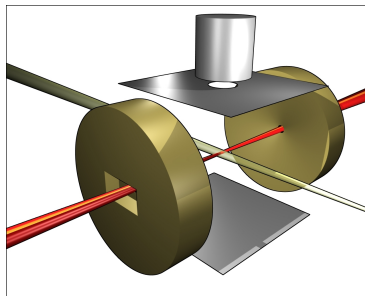
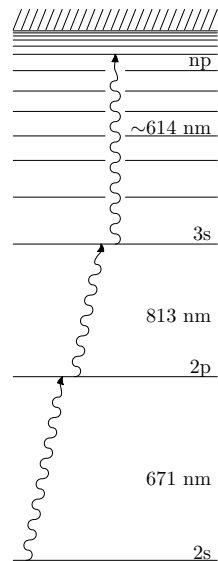
Anderson Localization - Destructive interference between many multiphoton paths localizes the electronic wave function, and ionization occurs when electron transport diffuses over the limit.



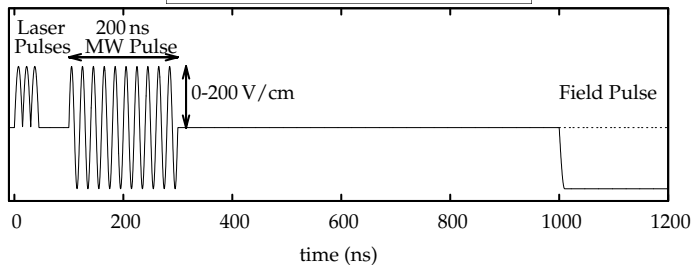
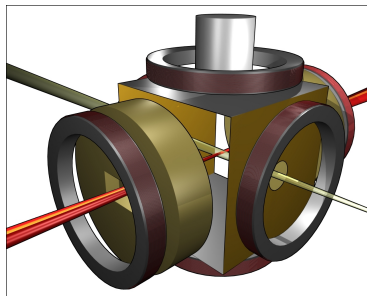
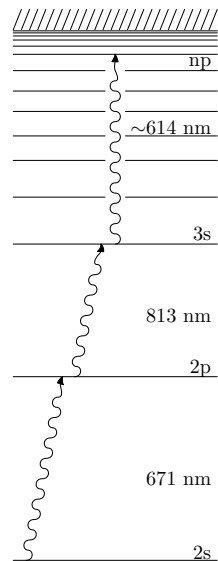
Schelle *et al.* - Anderson Localization crossing over to Fermi's Golden Rule

Schelle, Delande, and Buchleitner, *PRL* 102 (2009).

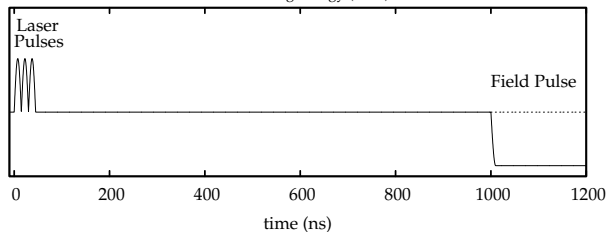
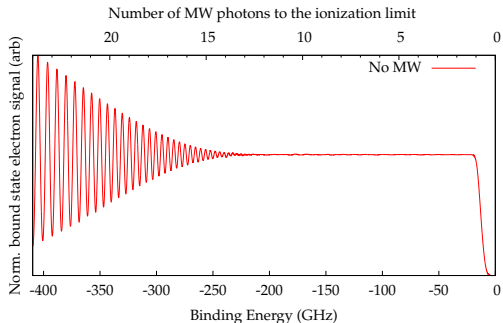
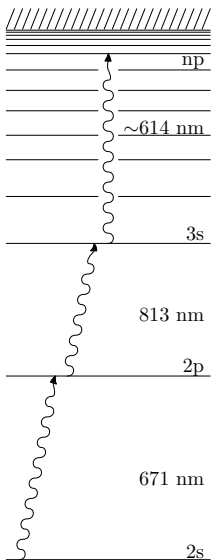
Experimental Setup



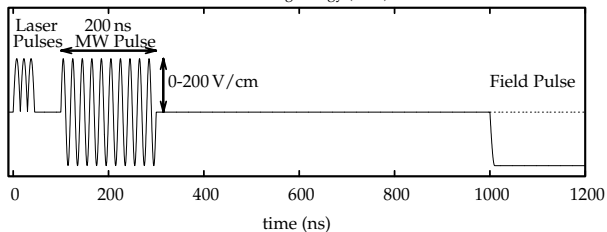
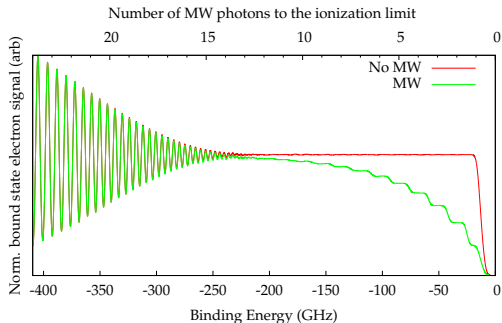
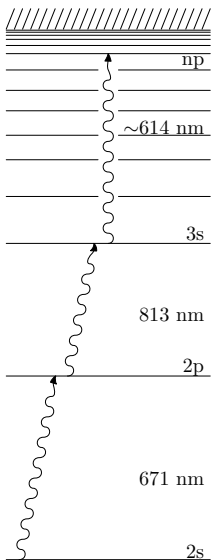
Experimental Setup



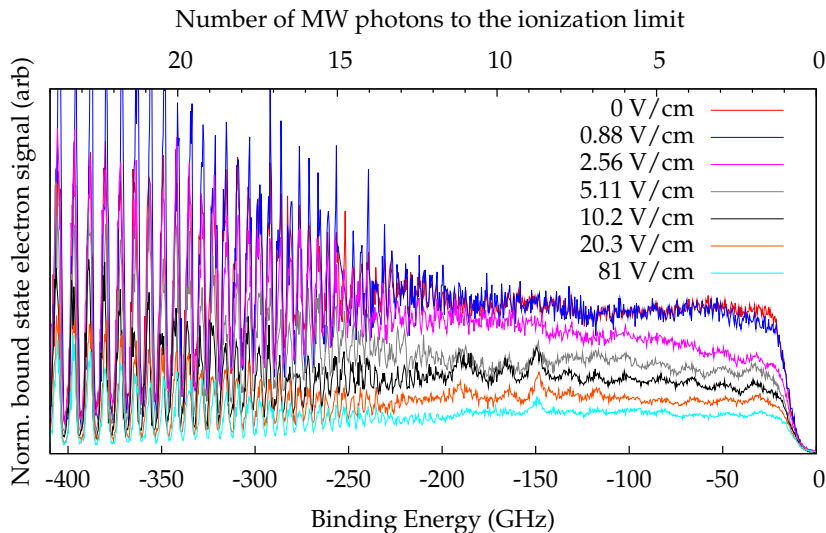
Expected Results



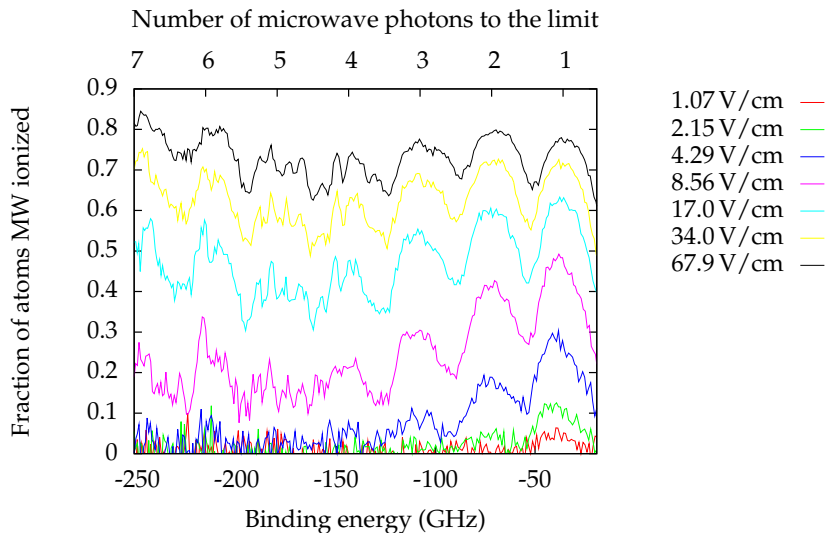
Expected Results



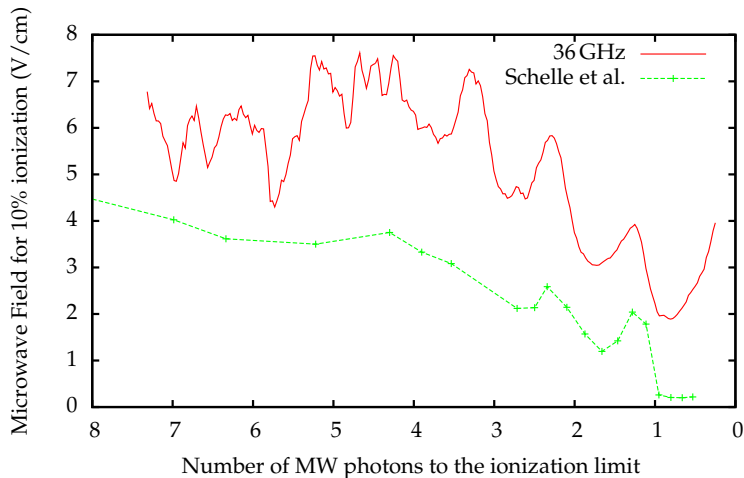
Microwave Ionization Steps - 17 GHz



Microwave Ionization Steps - 36 GHz

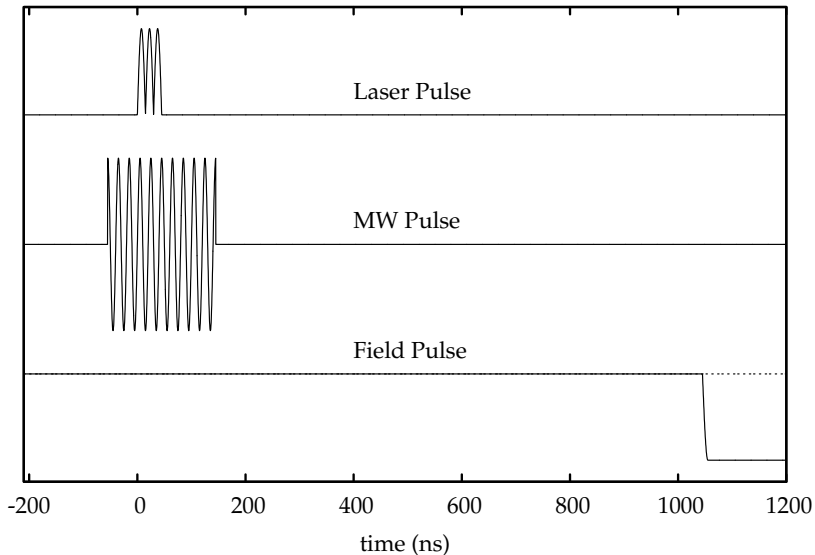


Schelle, Delande, and Buchleitner Comparison

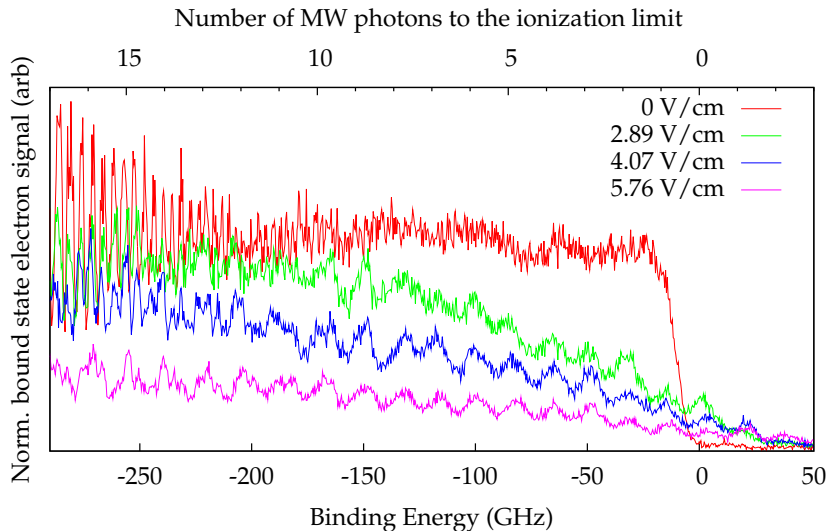


Schelle, Delande, and Buchleitner, *Phys. Rev. Lett.* 102, (2009).

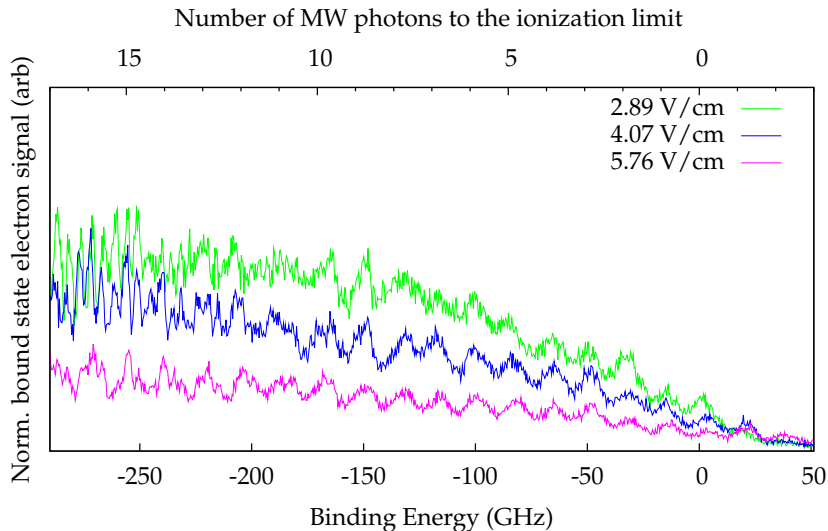
Above-Threshold Bound States - Timing



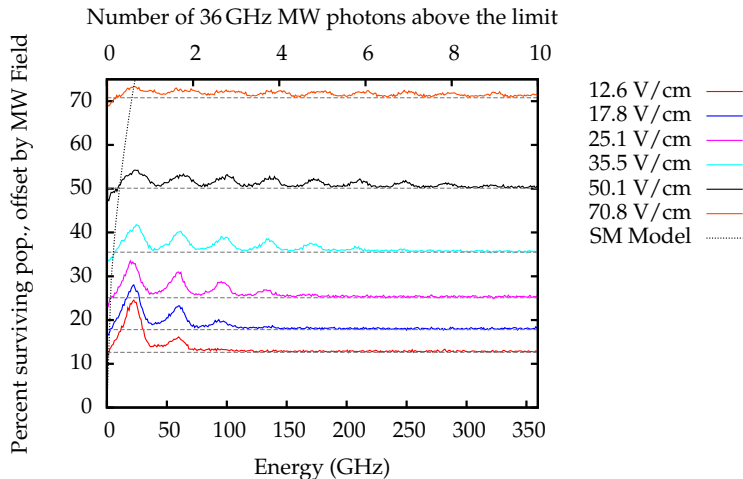
Above-Threshold Bound States



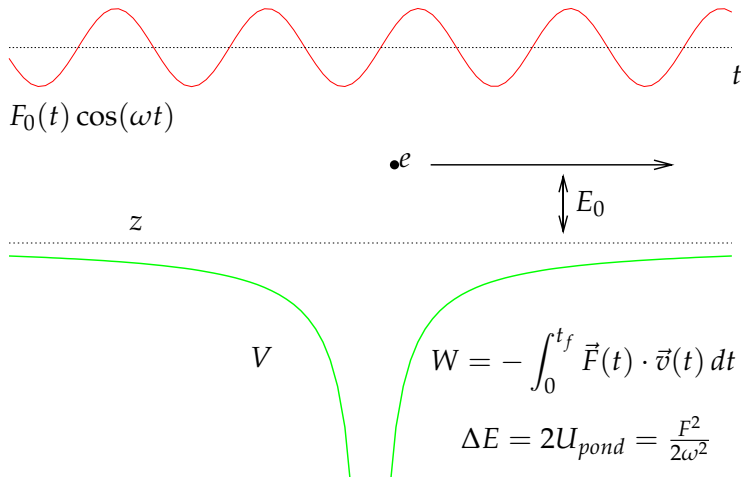
Above-Threshold Bound States



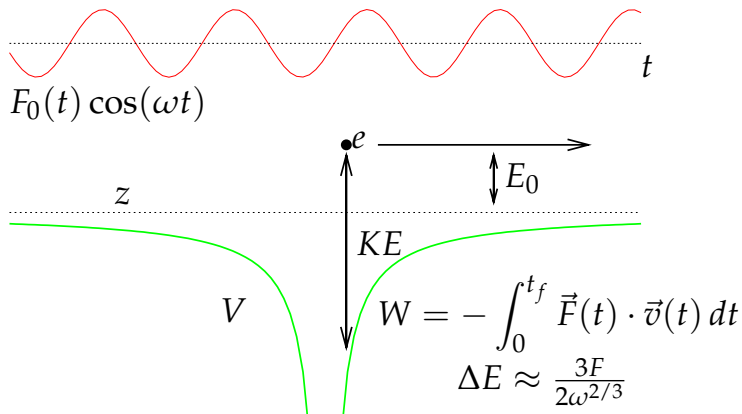
Above-Threshold Bound States



Simpleman's Model

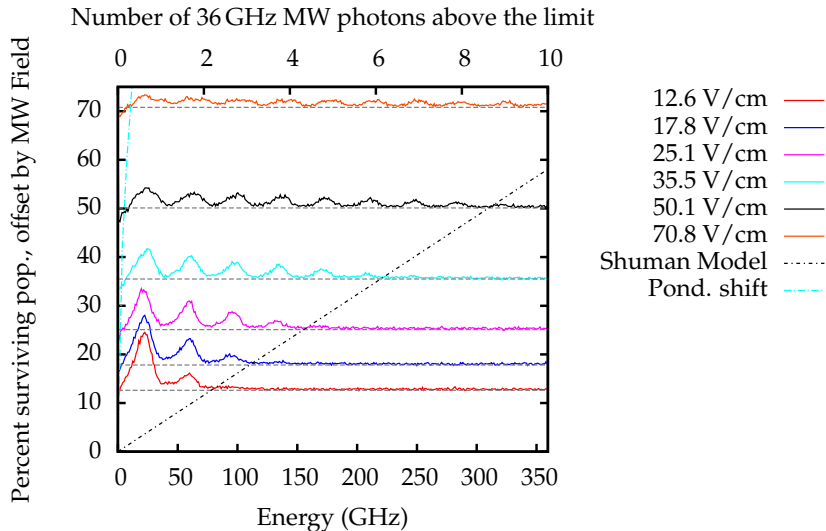


New Classical Model



Shuman et al., *Phys. Rev. Lett.* 101, (2009).

Above-Threshold Bound States



Conclusions

- ▶ An Anderson Localization model crossing over to Fermi's Golden Rule does not match experimental results
- ▶ The coherent coupling of levels both above and below the ionization limit describes microwave ionization of Rydberg atoms near the ionization limit
- ▶ A simple classical model illustrates population transfer from above the limit to bound states